

The Basics

The Warm Protection Products Specialist Roller Shutter Lintel System is a high security roller shutter that is concealed within a special purpose made lintel.

Roller shutter tracks are concealed within the cavity for ultimate security.

Roller shutter tracks are fitted onto purpose made cavity closure subframes which are built around during construction.

The combined subframe and roller shutter guide track allow for a thermal break in the cavity and acts as a vertical damp proof course.

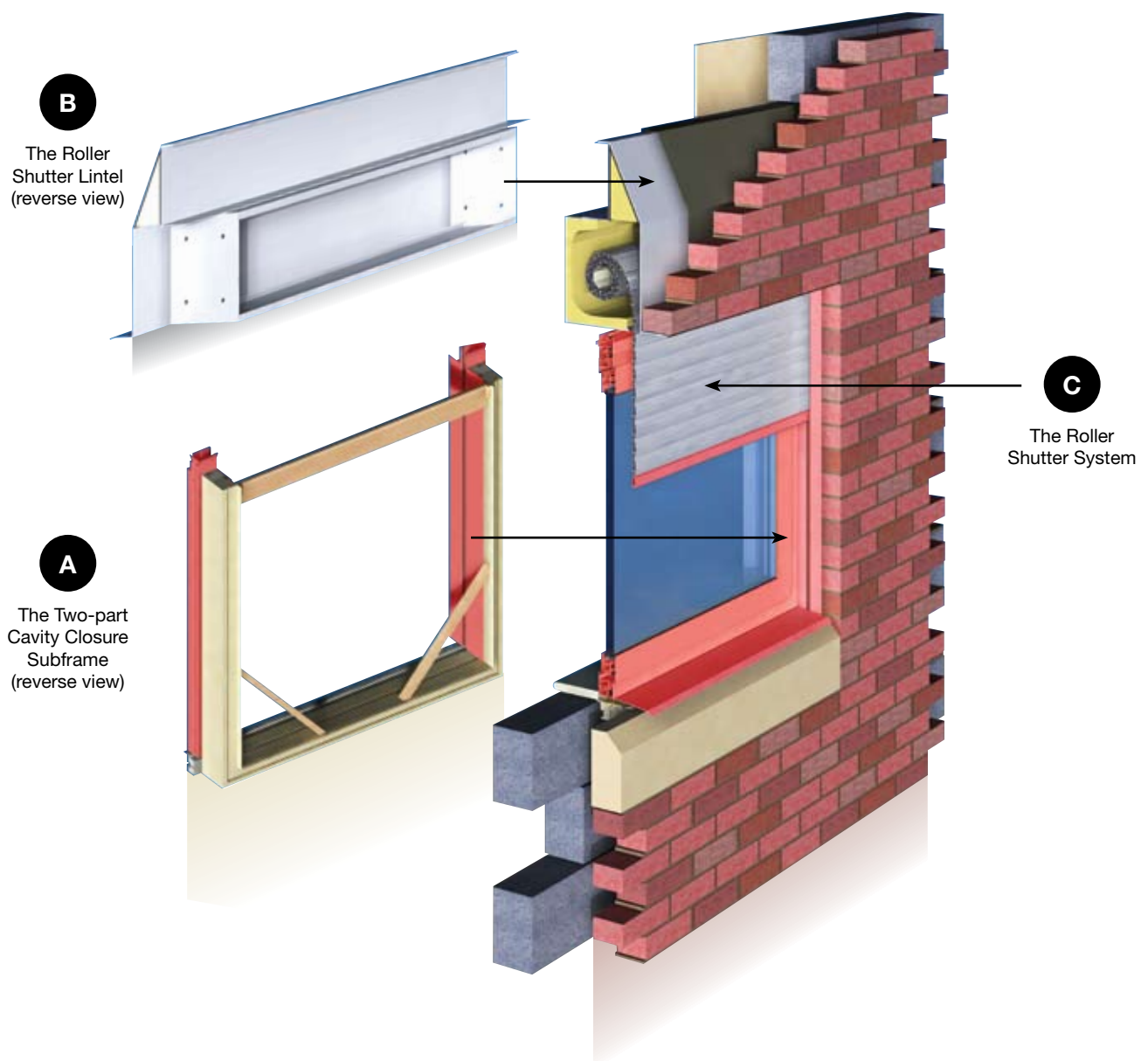
The subframe two-part section ties both the brick and blockwork and has a substantial face return for fixing window/door frames.

Lintels are fitted with a three-part internal insulation section, fitted after roller shutter installation, this ensures high performance internal insulation and acoustic properties.

The System

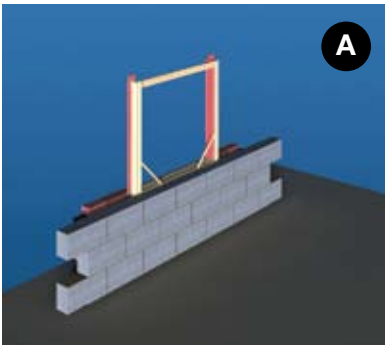
The Warm Protection New Build Roller Shutter Lintel System consists of three major components:

- A** An insulated two-part cavity closure subframe incorporating roller shutter guide tracks.
- B** Purpose made hot dipped galvanised steel lintel with roller shutter bracketry and insulation.
- C** High security roller shutter system with electronic Somfy motors and controls.

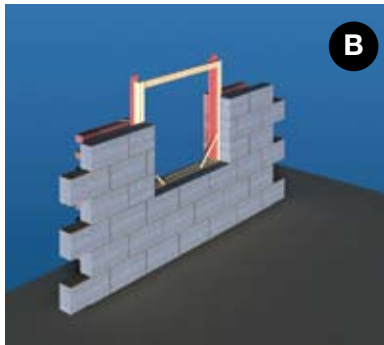


For technical details on these major components please turn to technical page 10 through to page 17

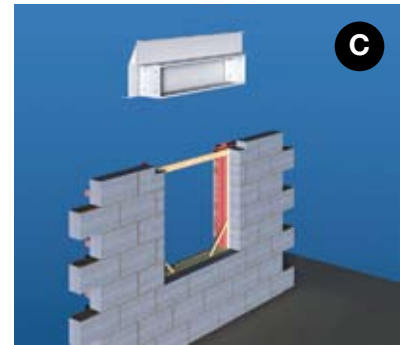
The Build



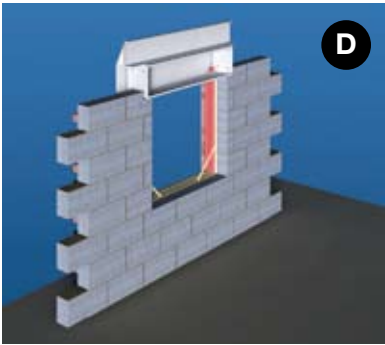
Subframe positioned.



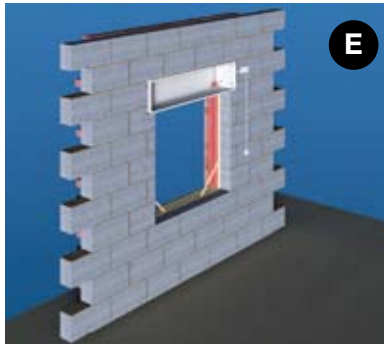
Brick and blockwork around subframe.



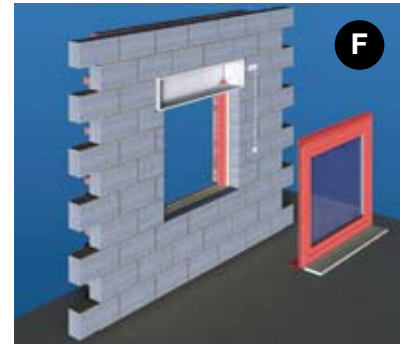
Blockwork stepped at opening height for lintel location.



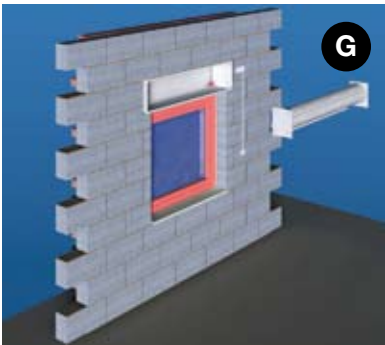
Lintel located over subframe guide locator and supported on stepped blockwork.



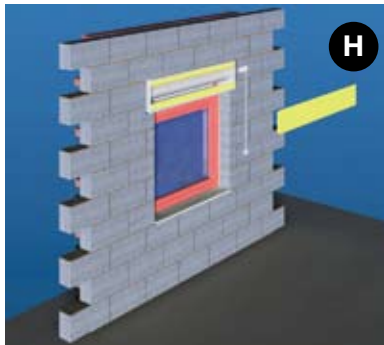
Brick and blockwork complete around lintel, subframe and electrical first fix.



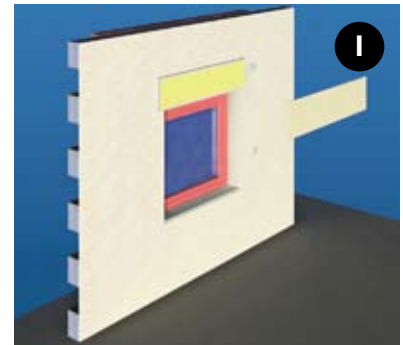
Removal of timber supports and installation of window/door frame.



Installation of roller shutter bracketry and roller shutter.



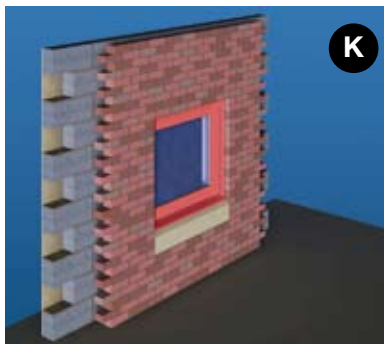
Installation of insulation.



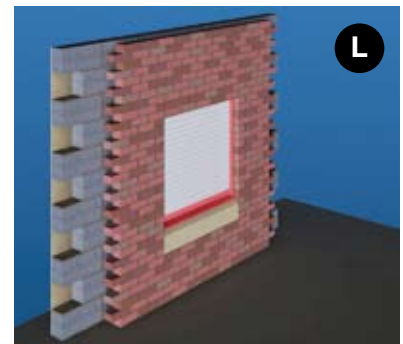
Internal plastering and soffit board installation plus removable access panel.



Check on mechanical settings.



External view of shutter fully open.



External view of shutter fully lowered.